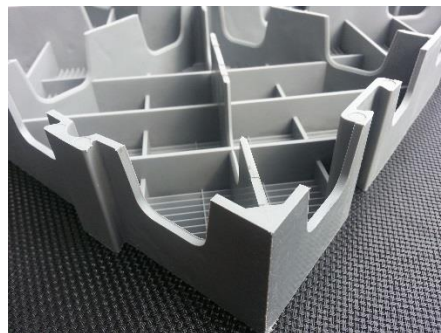
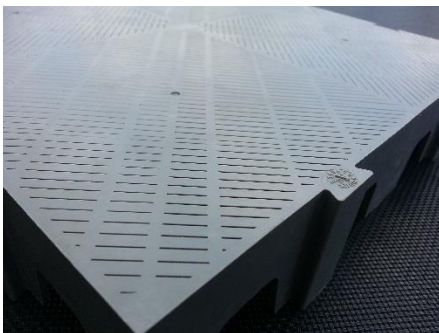




GFS Wedgewater™ Filter System

- **Simple integral design** - Each 12" x 12" x 2" block is single-piece injection molded. No parts within other parts. Under drain is embedded into the design of the block.
- **Easy assembly** - Blocks assemble together easily, with an interlocking dove-tail pattern. A rubber mallet is the only tool needed for installation.
- **Fast, easy replacement** - Damaged block replacement is fast and easy! Blocks do not fasten to slab. Only the perimeter of the Wedgewater™ bed is secured (for sealing purposes).
- **Easy build-up removal** - No underdrain wash down system necessary! Periodic solids build-up is handled by removing a few blocks in the affected area and washing the solids away with a hose.
- **Extremely durable design** - Wedgewater™ blocks are molded from high strength, UV stabilized, thermoplastic polyurethane. Shrugs off the effects of the sun and extreme temperatures.
- **Cake removal is fast and easy** - Wedgewater™ blocks can support 1000 pounds/sq. ft. live load. Plenty of support for a small front loading tractor (*ask your GFS representative for tractor selection guidelines*)
- **Extremely clean filtrate!** - Due to close tolerances and the Simple, inter-locking design, Solids loss is extremely low.



For more information visit: [Wedgewater-Filter-Bed-Brochure.pdf](#)